



The ELINO pool has been designed to match durability, strength and quality with European style. Its structure is made of 100% galvanized steel and its installation on a concrete slab makes it a perfect choice for a pool that will last.

Advantages

SEVERAL INSTALLATION POSSIBILITIES

- Completely above ground
- Semi above ground
- Mixed inground and above ground
- Our structure is self-supporting

SUSTAINABLE PRODUCT

- Galvanized steel structure embedded in concrete
- Corrosion protection: epoxy-based primer paint or hot-dip galvanizing

QUICK INSTALLATION

- Day 1: fabrication of the concrete slab
- Day 2: assembly of the pool

SEVERAL SIZES POSSIBLE

- Its shape is designed to adapt to small spaces or to integrate into uneven terrain.

SIDING VARIETY

- Customer has the option of choosing his own siding



Your measurement

Opt for a square or rectangular pool with elegant lines and choose from our ideal sizes for all types of space.



Your siding

Dress up your pool with a durable and trendy coating, such as aluminum, natural stone or a Canoxel-type prefinished facing.



Your liner

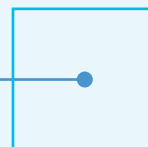
Choose your liner according to the desired look! Our selection of liners has been thought out so that you can find the one that will perfectly match your decor.

Shapes and sizes

SQUARE

9 ft x 9 ft

13 ft x 13 ft

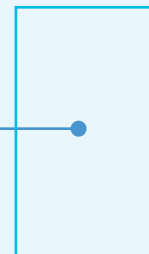


RECTANGULAR

9 ft x 13 ft

9 ft x 16,5 ft

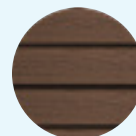
13 ft x 16,5 ft



The structure of an Elino swimming pool allows to add the exterior cladding of your choice.



Natural
stone



Pre-finished
siding

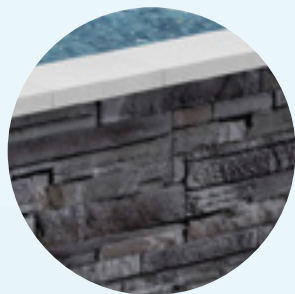


Aluminum
composite

** The above types of exterior cladding are examples only.
Coatings and colors according to customer's choice.*

51-inch wall

for heightened
security



Wall design

