



ABOVE GROUND POOLS

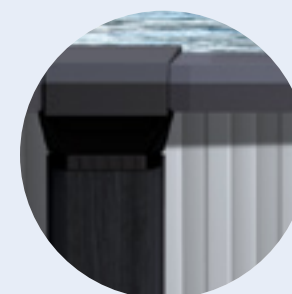
Discover our models




Inspiration
par/by AQUA LEADER

ZION

With its modern appeal, the ZION model features an extremely robust structure made entirely of UV resin. Year after year, your pool will maintain its pristine look. A pool designed with elegance and style!



9-inch resin rail and contrasting posts

Resin is UV resistant and requires no maintenance.

54-inch OSLO wall

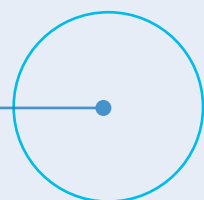
For heightened security



Shapes and sizes

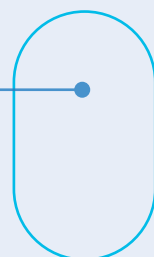
ROUND

12 ft
15 ft
18 ft
21 ft
24 ft
27 ft
30 ft



OVAL

12 ft x 24 ft
15 ft x 26 ft
15 ft x 30 ft
18 ft x 33 ft



With their streamlined design and modern appeal, the MAUI, GEMINI, BALI and IMPERIA models pair style, performance and durability. Building upon the expertise and know-how of Aqua Leader, these pools will bring great joy to your summer. Enjoy!

MAUI / GEMINI

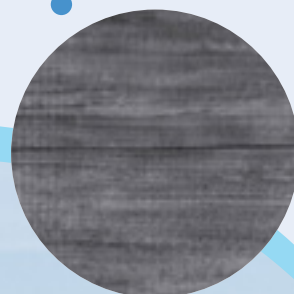
6-inch resin rail

Monochrome posts on the GEMINI.

Two-tone offered on the MAUI model



52-inch DRIFTWOOD wall

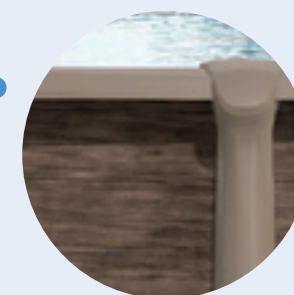


BALI / IMPERIA

6-inch resin rail

Monochrome posts on the IMPERIA.

Two-tone offered on the BALI model



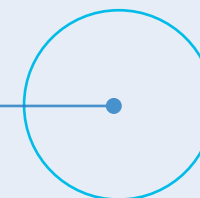
52-inch KOA wall



Shapes and sizes

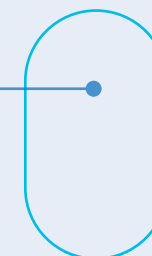
ROUND

12 ft
15 ft
18 ft
21 ft
24 ft
27 ft
30 ft



OVAL

12 ft x 16 ft
12 ft x 20 ft
12 ft x 24 ft
15 ft x 26 ft
15 ft x 30 ft
18 ft x 33 ft



STEEL

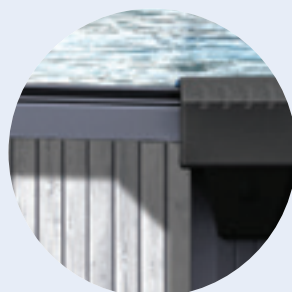
Above ground pools

Are you looking for a quality product at an affordable price? Designed following longstanding above ground pool tradition, the ARA and ARIAN models feature sturdy steel parts for peace of mind and years of enjoyment. You can't go wrong!

ARIAN

6-inch steel rail

Steel rails provide stability, strength and elegance.



52-inch COUNTRY wall

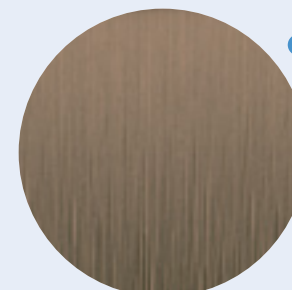


ARA

6-inch steel rail



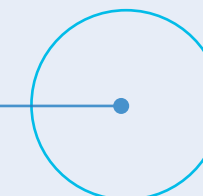
52-inch PATHFINDER wall



Shapes and sizes

ROUND

12 ft
15 ft
18 ft
21 ft
24 ft
27 ft



FILTRATION

Filters

These compact, energy-efficient systems are designed to remove solid suspended particles from pool water. They feature top-performing technology commonly used in residential filtration systems. Cleaning does not require a backwash. In other words, you save on water treatment chemicals and heating costs.



Sand filtration

The pump allows water to flow throughout the pool and to go through the filtration system. The sand (natural stone and glass can also serve as filter materials) retains dirt to make the water cleaner.



PUMPS

The pump plays a vital role in renewing your pool water as it pushes the water through the filter. Make sure to pick the right one!

Types of pumps

1S

One-speed pumps

They are the most economical to purchase and offer reliable performance year after year

2S

2-speed pumps

These pumps run on high or low speed. Also, they are quiet and allow for energy savings of up to 70%.

PG

Programmable 2-speed pumps

The pump's digital controls allow you to program the pump so that it switches between high and low speed given times during the day.



Distinction

1S

2S

PG

Maxi
by Carvin

1S

2S



Silensor
by Nirvana

1S



Powerflo Matrix
by Hayward

1S

2S



HEATING

Heat pumps allow you to extend your pool season from earlier in the spring to later in the fall. You're able to get the most out of your summer! Of every type of heating system, heat pumps are the most energy efficient as they consume only a little bit of energy to produce heat.



F SERIES

by Nirvana

Variable speed heat pump starting at 85,000 BTU



NE SERIES

by Nirvana



Hayward HP Inverter



Distinction Inverter

PURIFICATION

Salt water chlorine generator

Simple and efficient, generators work by electrolysis, breaking down the salt in the water into chlorine and sodium. This ensures the daily purification of your pool water.



Aquatrol

Chlorine generator

by Hayward



UV technology

When water passes in front of the lamp, the microorganisms it contains are eliminated: 99% of bacteria and viruses are eliminated. This is a safe automatic treatment to be used in combination with your main purification system.



Helios

UV Disinfection System

by RBF International for above ground



OUR PARTNERS



POOL ACCESS

Swimming is even more enjoyable when your pool features a safe, convenient access. Choose the right equipment for your needs.



Stairs
Biltmor et Royale II
by Innovaplas / Lumi-O



Stairs

The wide surface of each step and the railing makes getting in and out of the pool a breeze. What's more, steps are great for sitting down, relaxing and keeping an eye on the children.

Stairs
by Olympic



Safety ladders
by Olympic



Safety ladders
by Innovaplas / Lumi-O

Ladders

An exterior ladder with an automatically locking door allows you to secure the pool and prevent unsupervised access by children

CLEANING

Our automatic cleaning solutions are simple, easy to use, energy efficient and offer high performance.



Aquabug
Cleaner
by Hayward

Distinction
Cleaner
by Hayward



Elix Robot
by Olympic



Helios Robot
by RBF

OUR PARTNERS



LIGHTING

When night falls, transform your pool into an enchanting and welcoming place of relaxation. Whether battery powered, electric or solar powered, lighting is the perfect way to create a unique atmosphere.



ACM-125C
Step light
by Olympic



ACM-198C
Return fitting
light
by Olympic



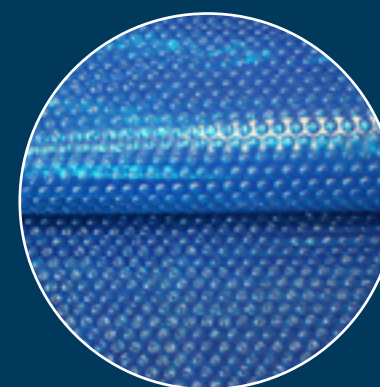
STARBRIGHT
Return fitting
light
by Carvin



ACM-197C
Skimmer light
by Olympic



INNOVALITE
Step or wall light
by Innovaplas / Lumi-O

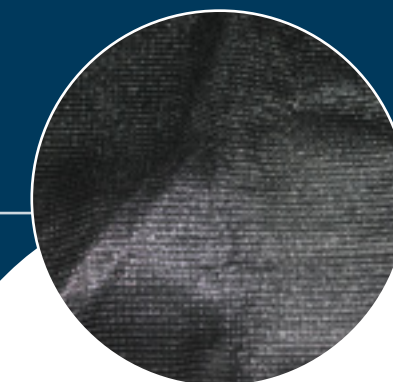


SOLAR BLANKET

In addition to keeping the heat, solar liners limit water evaporation and reduce the need for chemicals.

WINTER COVER

Made of UV high density polyethylene, winter covers are lightweight, easy to handle and install. They extend life of the printed pool liner.



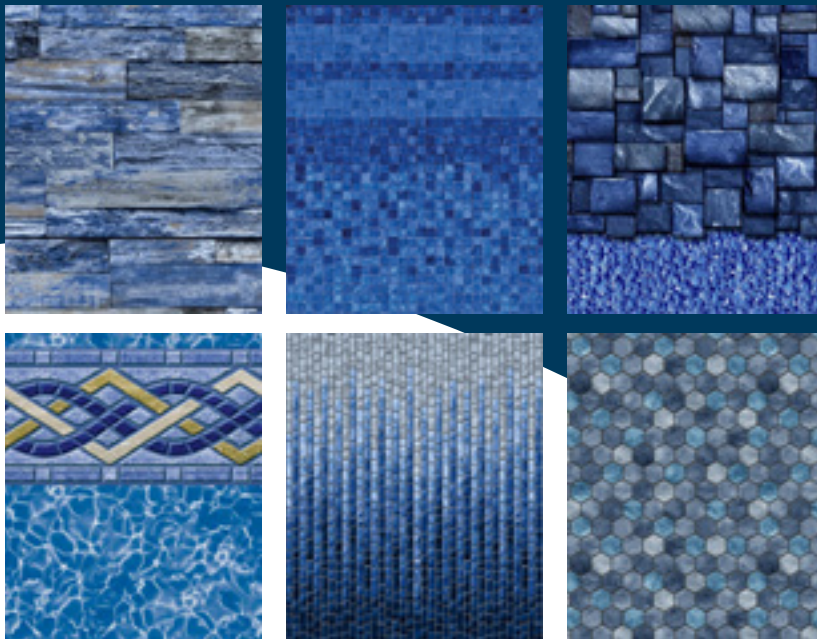
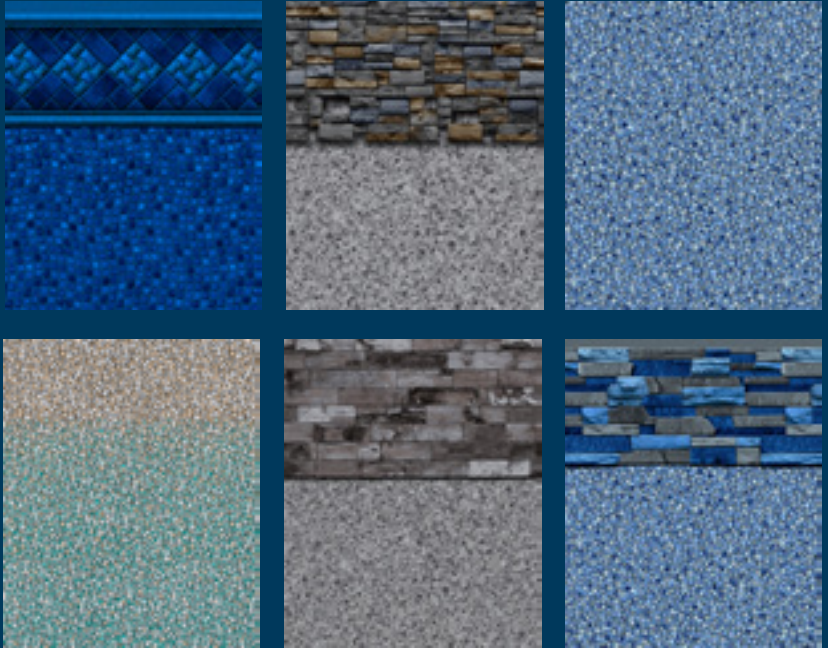
POOL LINERS

The finishing touch!

Our liners are chosen according to the highest industry standards. Installation is a meticulous job best left to professionals. Stop by your local SIMA dealer to see all the designs available.



Made in Canada, AquaFab is known for its premium quality vinyl measuring 16 thousandths of an inch thick, for both the walls and the bottom. Each liner undergoes a rigorous quality control process that guarantees an exceptional product.



latham

Ultra Seam technology

Most liners have visible joints along the ground that don't always look so great. Our exclusive manufacturing process allows for stronger joints that are practically invisible.

*sima*TM
POOLS
& SPAS